

Description

Yantel's surface mount catalog bandpass filters utilize Yantel's low loss temperature stable materials which offer small size and minimal performance variation over temperature. The catalog BPF's are offered in a variety of frequency bands, which offers a drop in solution with highly repeatable performance.

Features

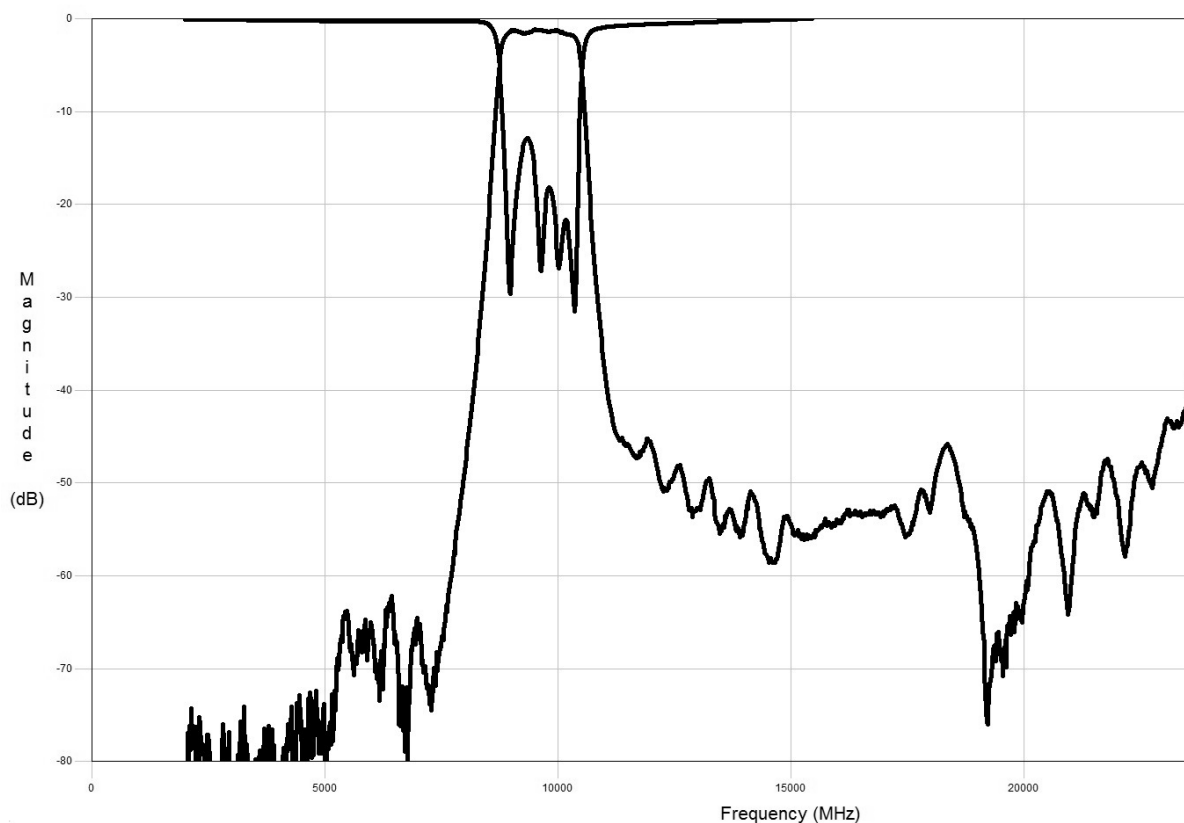
- Small Size
- Fully Shielded Component
- Solder Surface Mount Package
- Moisture Sensitivity Level: MSL1
- Frequency Stable over Temperature
- Operating & Storage Temp: -55°C to +125°C
- Characteristic Impedance: 50Ω

Specifications*

Parameter	Frequency Range (GHz)	Min	Typ.	Max
Insertion Loss (dB)	8.9– 10.0		2.0	2.5
Return Loss (dB)		10.0	14.0	
Low Side Rejection (dB)	DC - 8.0	40.0	45.0	
High Side Rejection (dB)	11.5 – 20.0	40.0	45.0	
CW Input Power** (W)				TBD
Size (L x W x H)	10.16 x 3.81 x 2.62 mm			

*Electrical specifications based on typical probed performance at room temperature. Insertion loss shall vary up to ±0.5dB over.

Typical Measured Performance



Yantel Corporation

Add: No.308-322,3F,Building 1,Juchuang Jingu Innovation Park,Wenyuan Road 35,Xili Street,Nanshan,Shenzhen,China

Tel: 86-755-8355-1886 Fax: 86-755-8355-2533

For detailed performance specs & shopping online see Yantel web site : www.yantel-corp.com

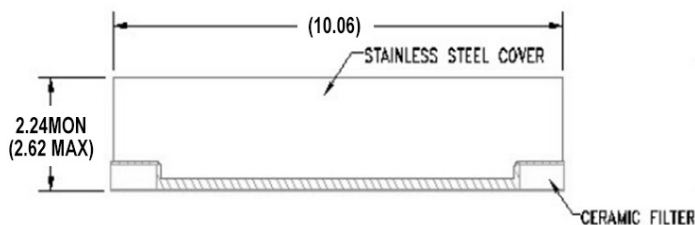
Physical Dimensions

Units = mm

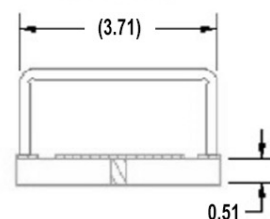
Top View



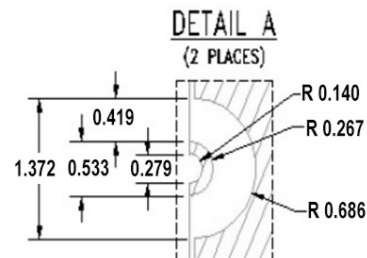
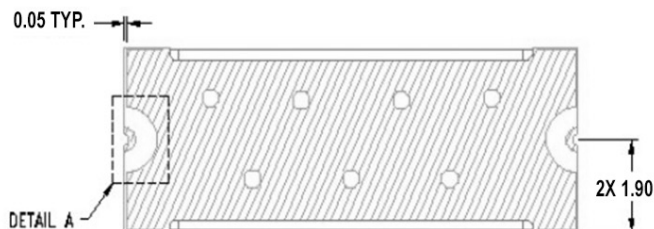
Side View



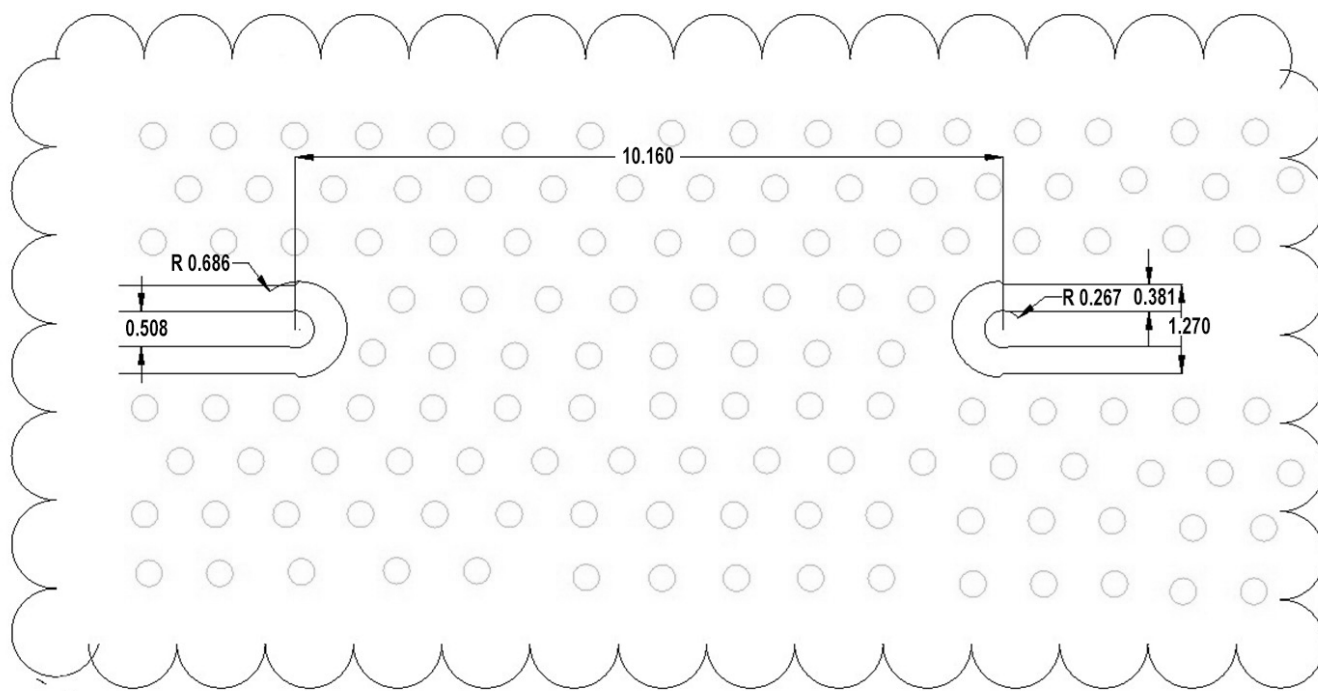
End View



Bottom View



Recommended PCB Layout



Unit =mm

Note:

- 50Ω trace dimensions are application specific.
- Ensure adequate grounding beneath the part.